

ISHE Summer State Conference Healthcare Facilities Navigation Exercise Results

Indianapolis, IN
August 21, 2009



Karen Kukec
Johnson Controls, Inc.
Milwaukee, WI
karen.a.kukec@jci.com



Needs Assessment

Evaluation of healthcare facility needs based on relative importance and current satisfaction

Target = 49 ISHE Participants

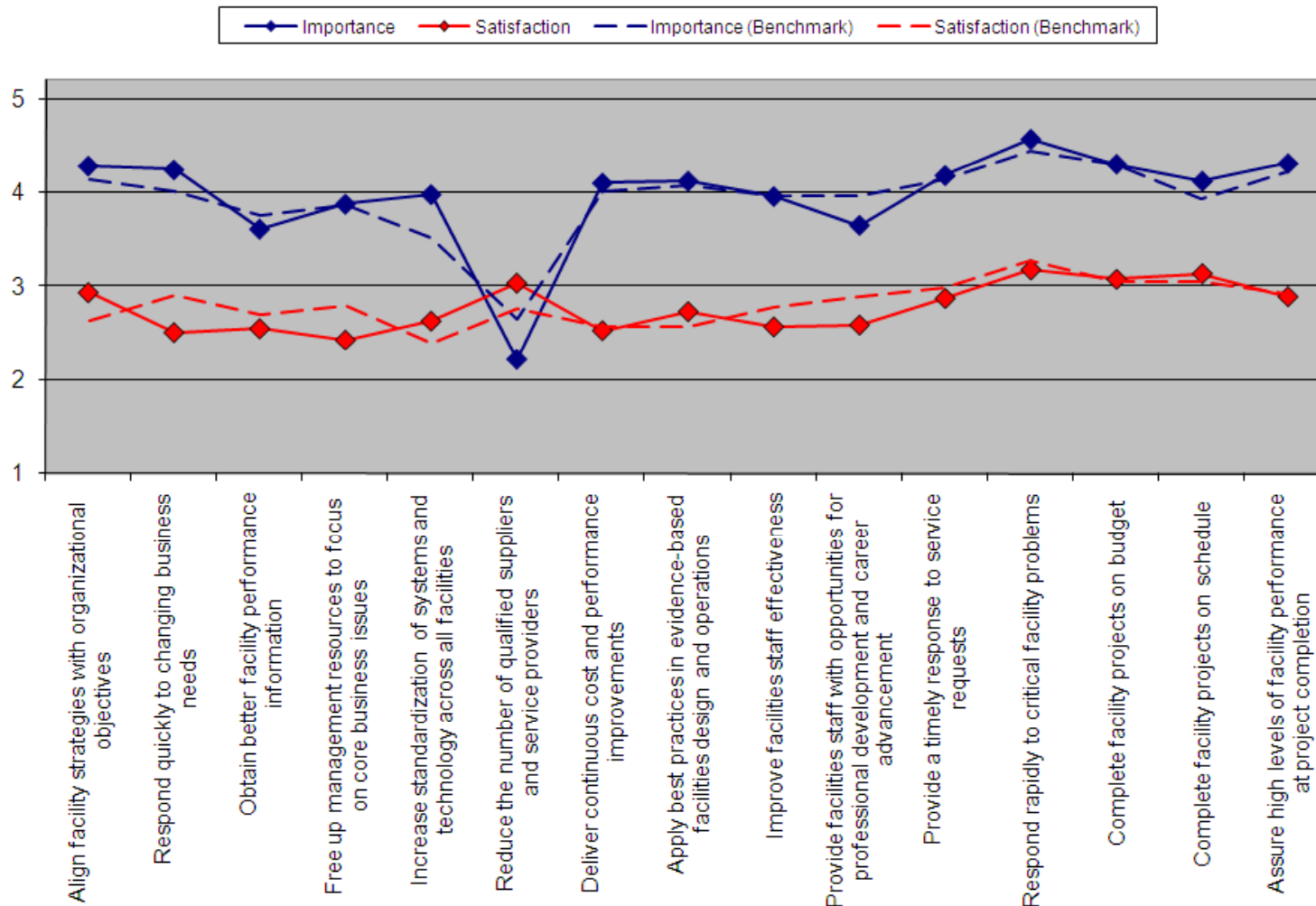
Benchmark = 223 Healthcare Organizations

“Top 8” Healthcare Facility Needs (Based on needs assessment)

1. Increase hospital revenue and reimbursements
2. Respond quickly to changing business needs
3. Deliver continuous cost and performance improvements
4. Obtain sufficient funding for facility operating expenses
5. Free up management resources to focus on core business issues
6. Reduce facility operating expenses
7. Obtain sufficient funding for facility capital investments
8. Assure high levels of facility performance at project completion

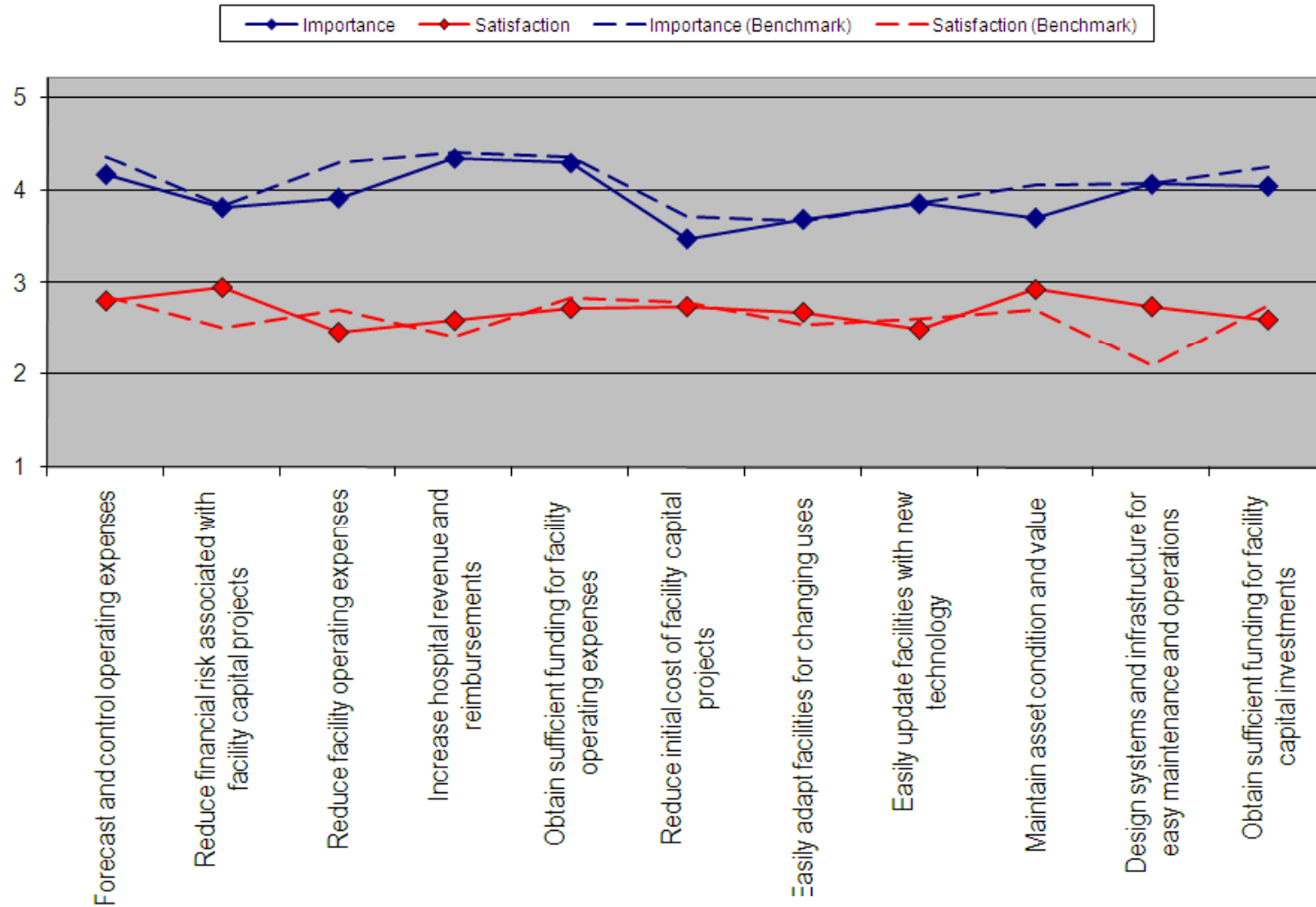
Needs Analysis

(Operational Performance)



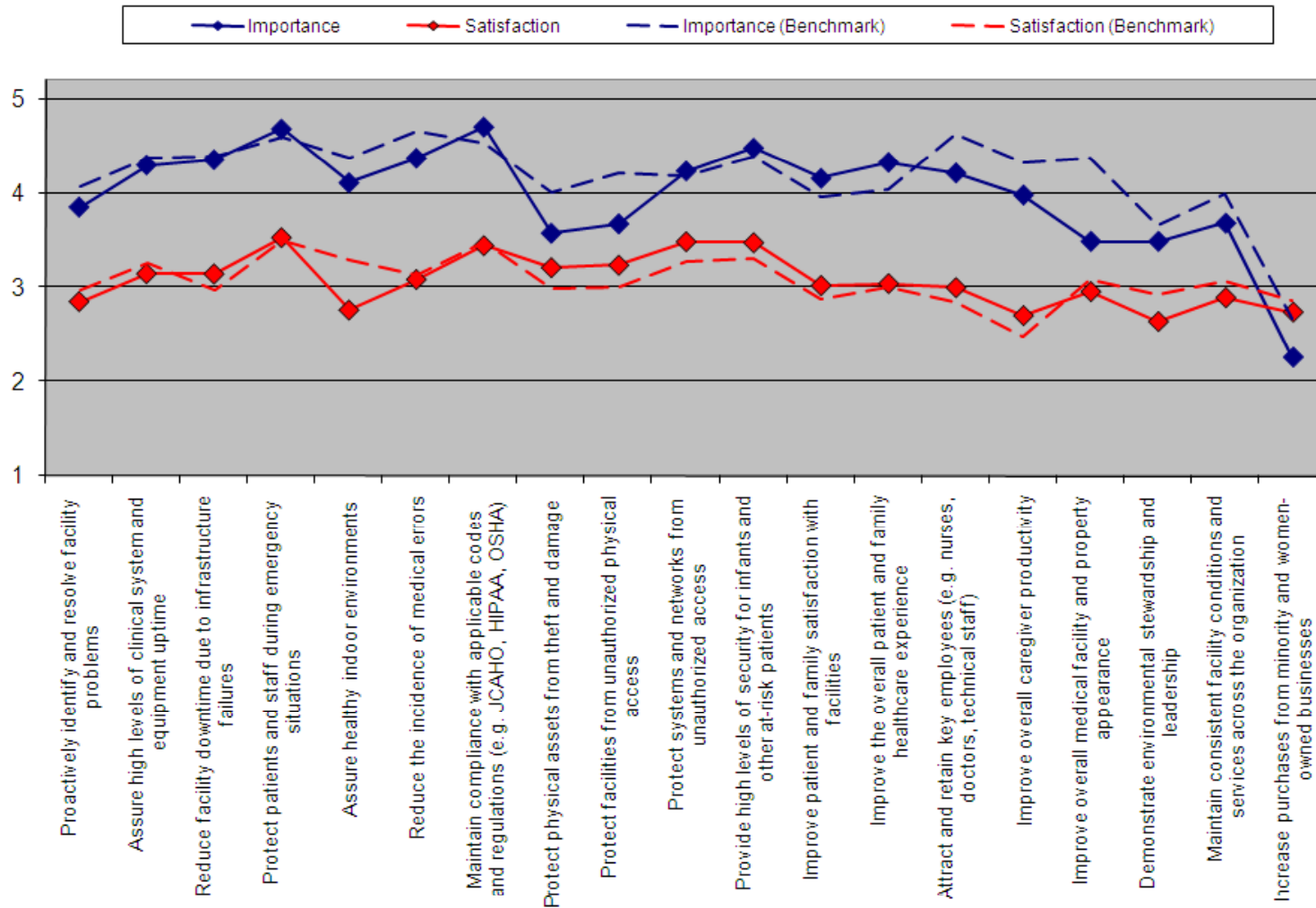
Needs Analysis

(Financial Performance)



Needs Analysis

(Risk/Relationship Management)



Practices Assessment

Evaluation of healthcare facility practices based on relative value and current levels of effectiveness

Target = 48 ISHE Participants

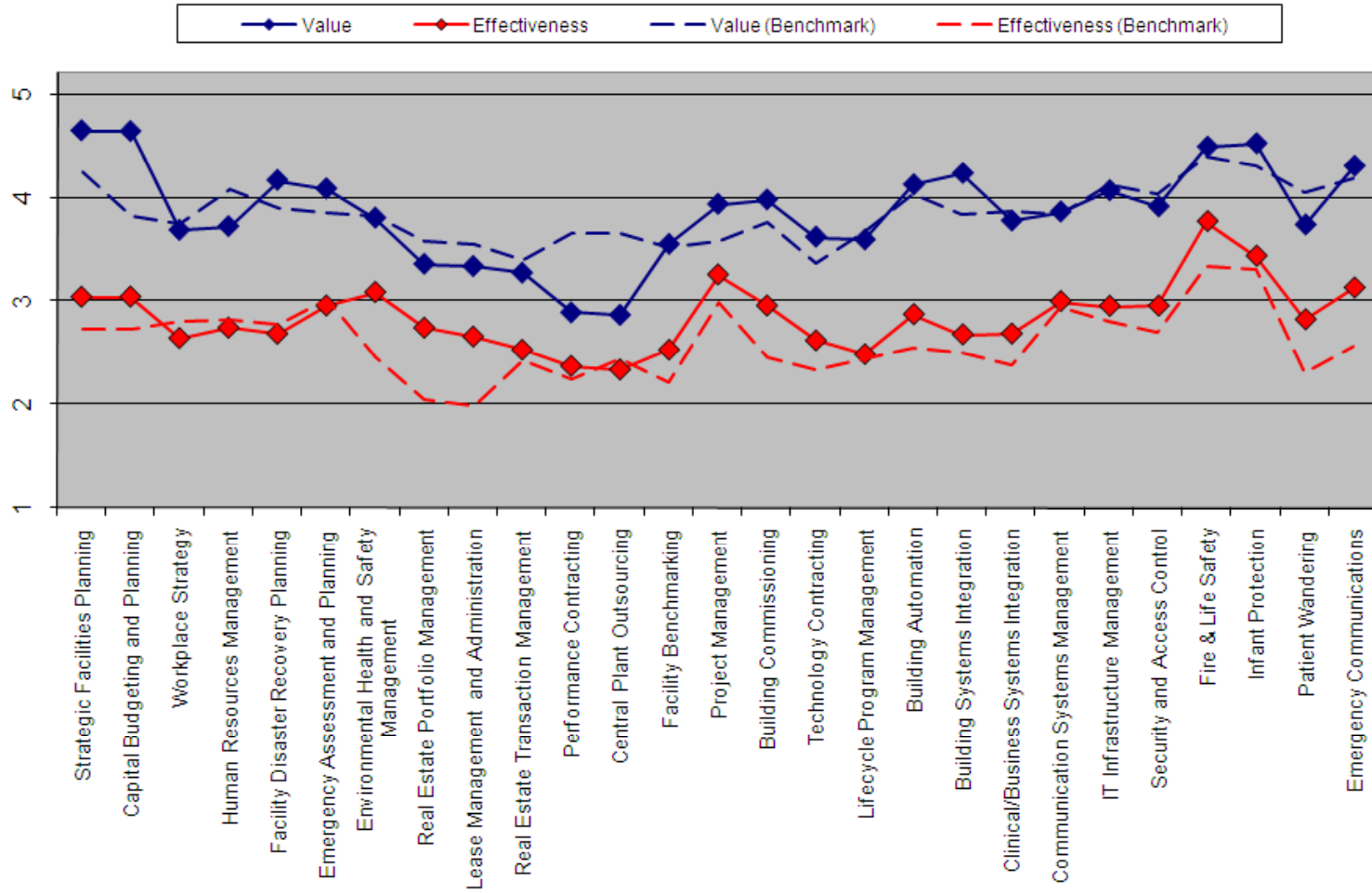
Benchmark = 132 Healthcare Organizations

“Top 8” Healthcare Facility Practices (Based on practices assessment)

1. Strategic Facilities Planning
2. Capital Budgeting and Planning
3. Building Systems Integration
4. Facility Disaster Recovery Planning
5. Training and Staff Development
6. Building Automation
7. Facility Performance Management
8. Emergency Communications

Practices Analysis

(Planning, Design, Construction)



Practices Analysis

(Operations, Maintenance)

